



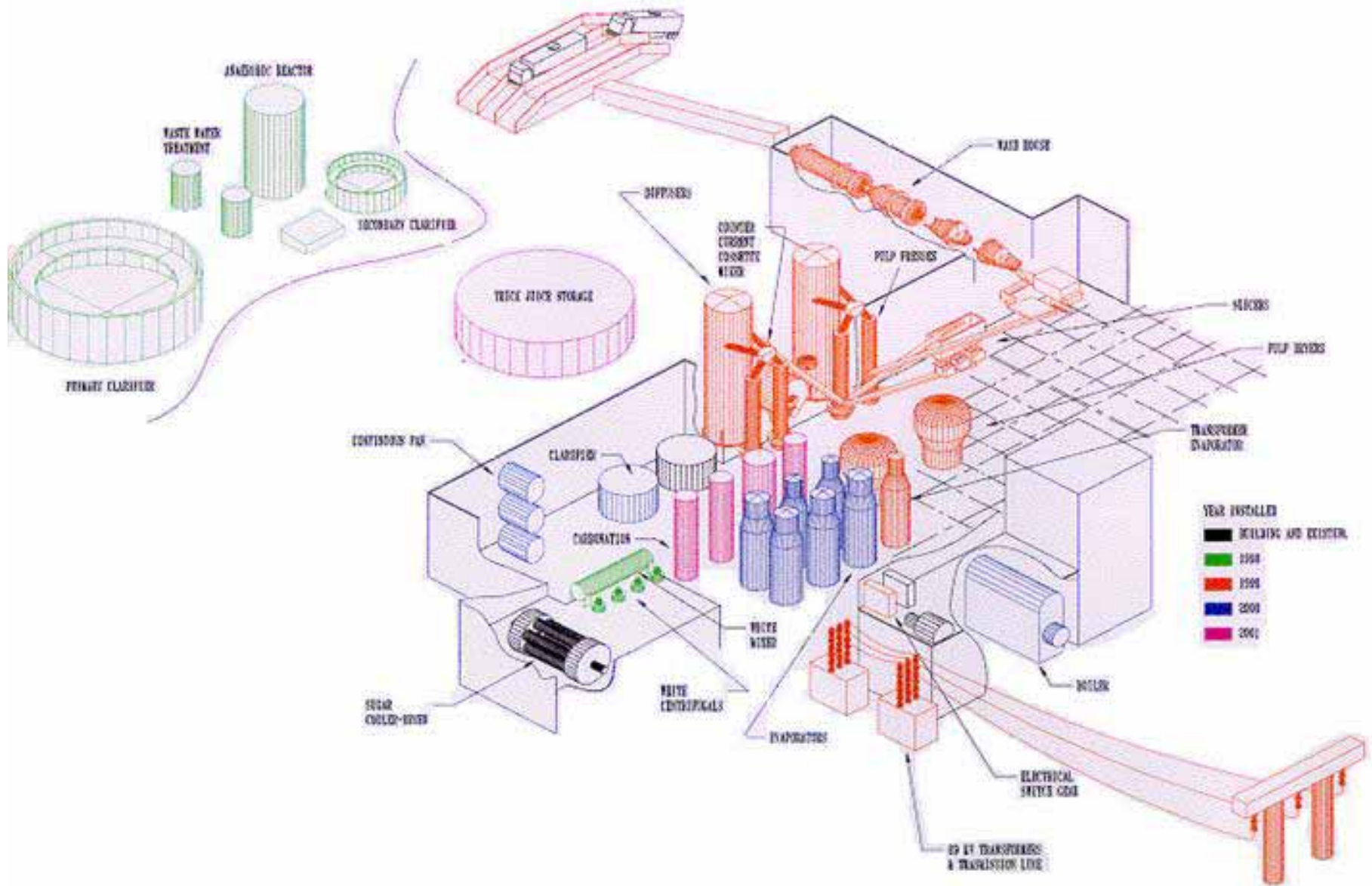
AURI

Fluidized-bed Steam Driers

May 16, 2006

Glenn Augustine, District Manager

Southern Minnesota Beet Sugar Cooperative



Southern Minnesota Beet Sugar Cooperative



Campaign Results

	<u>2005-2006</u>	<u>2004-2005</u>
Slice Days	209.89	194.58
Beets Sliced	2,663,248	2,475,354
Pulp to Driers	410,166	375,317
Pellets Produced	116,607	106,165



Moisture

	<u>2005-2006</u>	<u>2004-2005</u>
Pressed Pulp	73.95%	73.37%
Shreds	7.28%	6.36%
Pellets	10.83%	10.95%



Water Evaporated

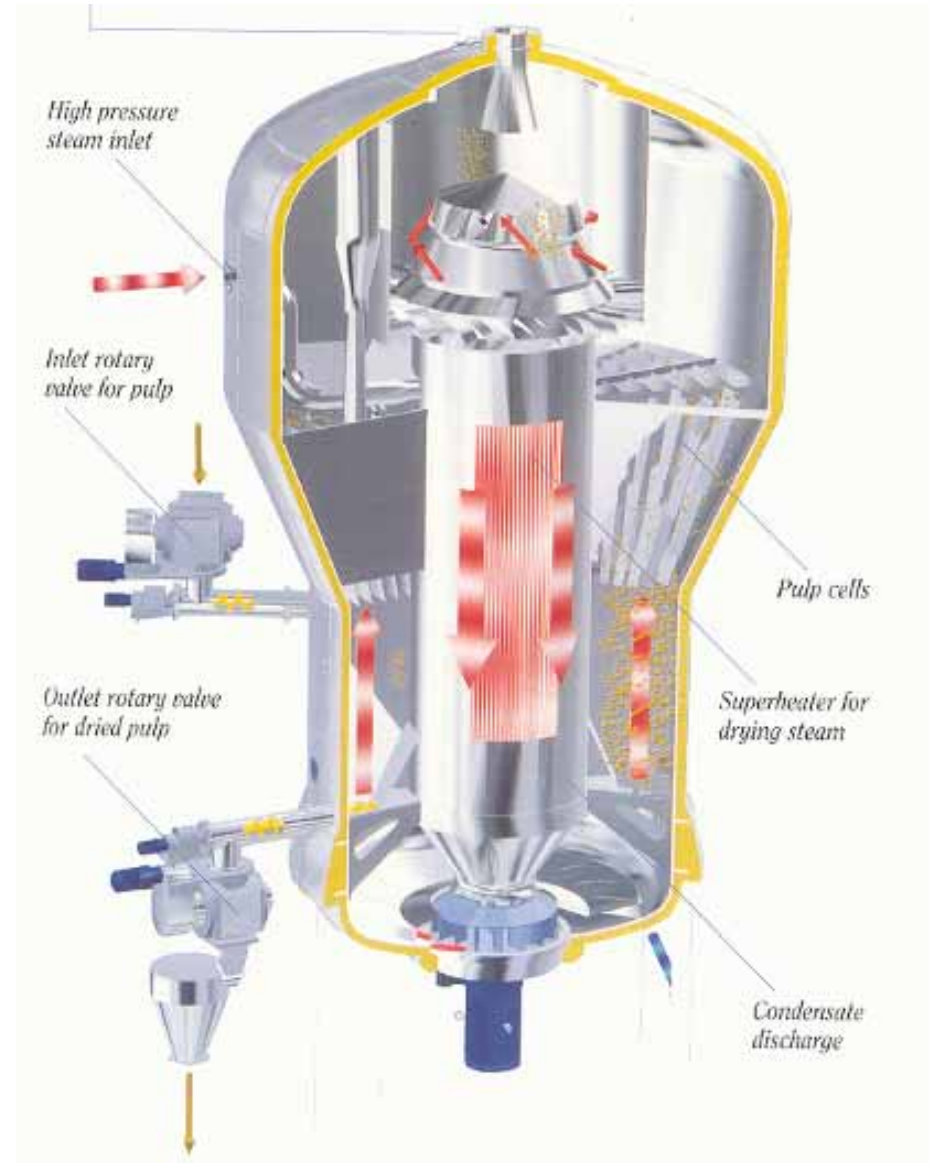
	<u>2005-2006</u>	<u>2004-2005</u>
Total Tons	303,318	275,370
Tons per Day	1,445	1,415
Tons per Hour	60	59



Drier Availability

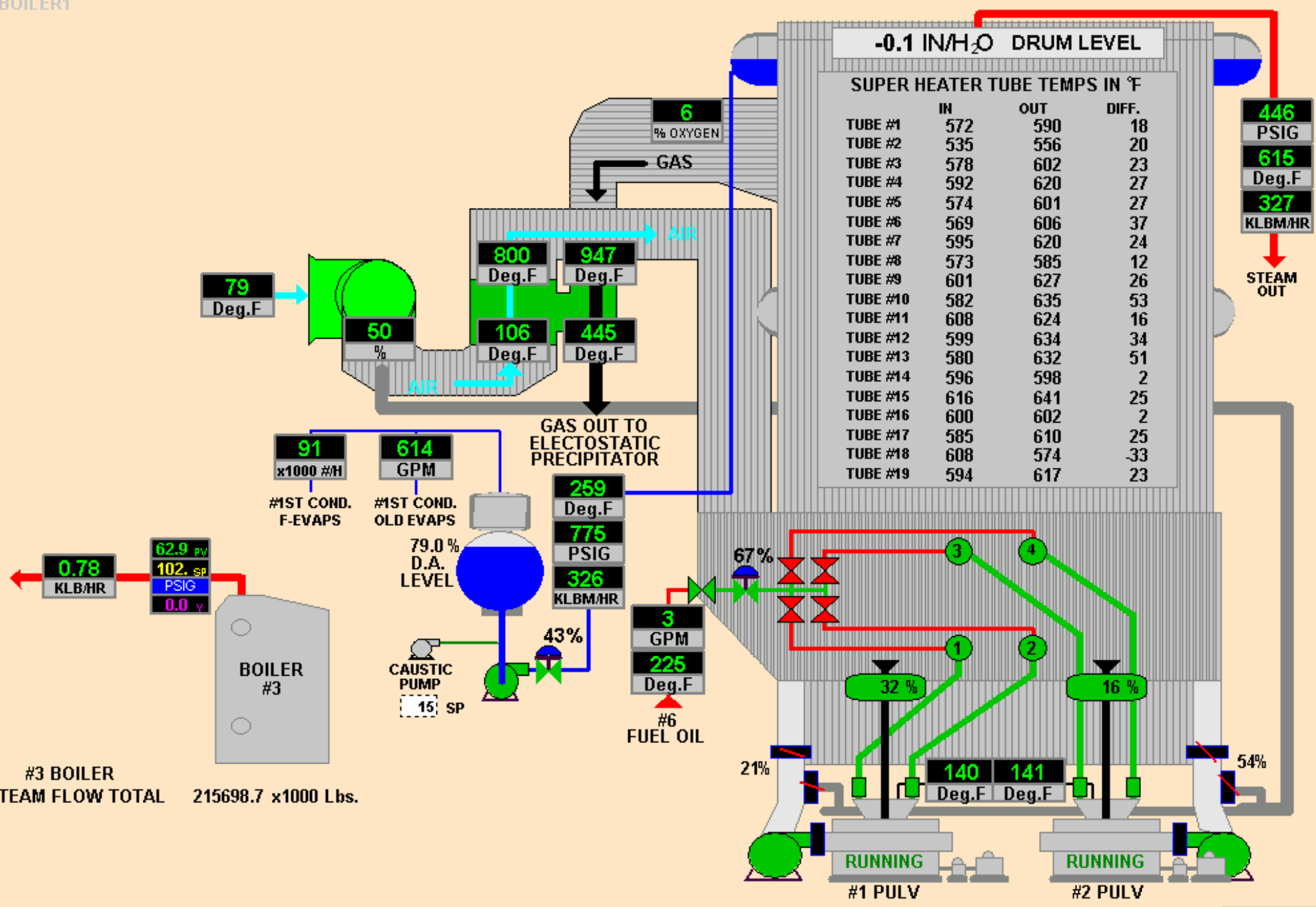
	<u>2005-2006</u>	<u>2004-2005</u>
Throughput - %	92.02	91.62
Drier Up-Time - %	98.20	97.25





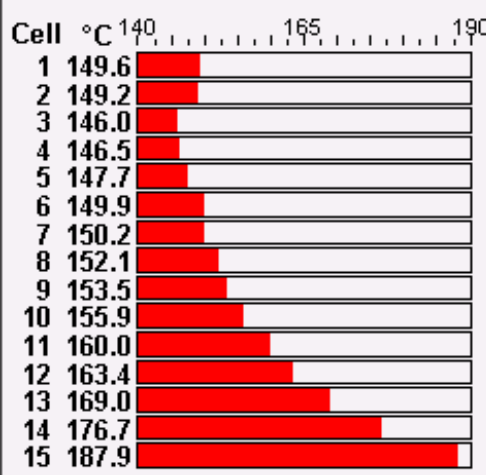
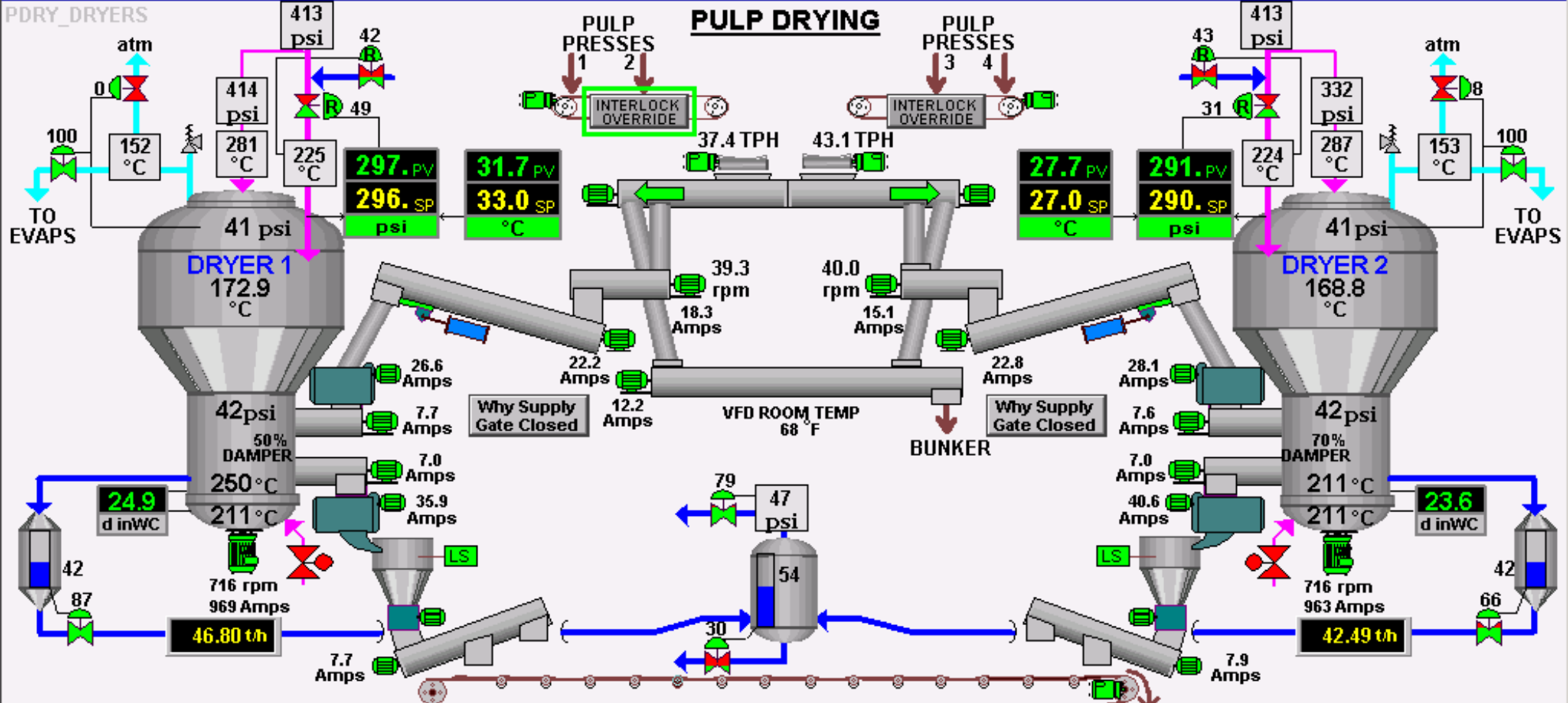
Southern Minnesota Beet Sugar Cooperative

BH_BOILER1



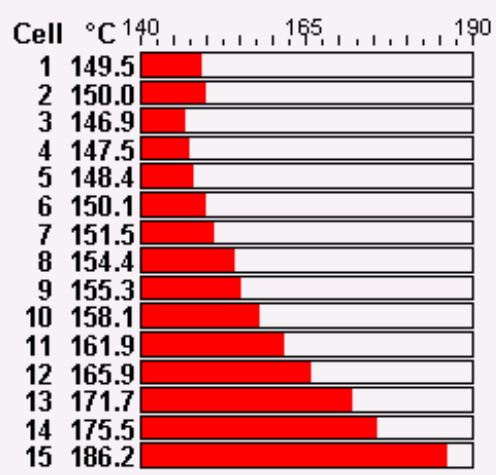
#3 BOILER STEAM FLOW TOTAL 215698.7 x1000 Lbs.

Alarms

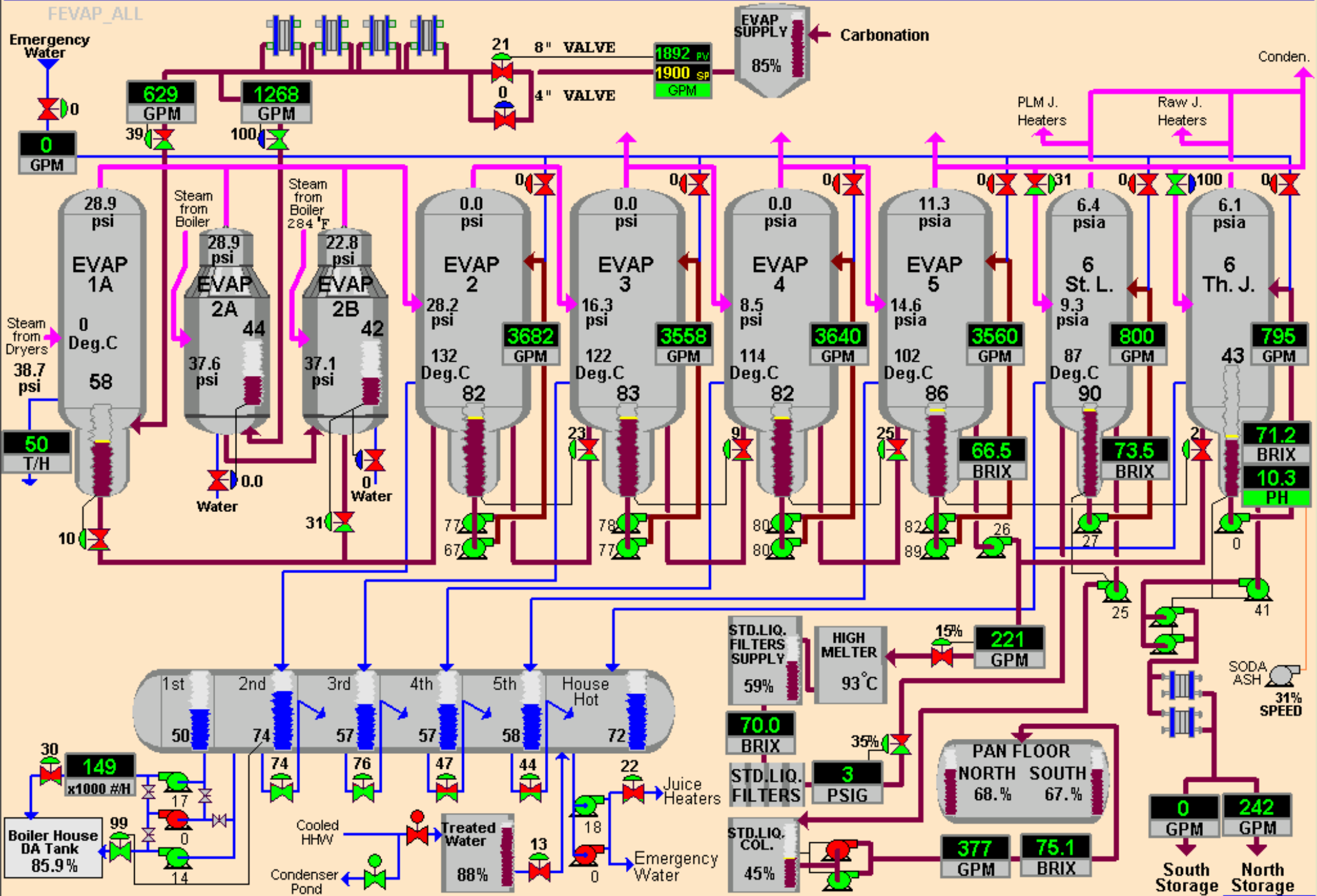


Pellet Coolers Status

	#1	#2	#3	#4
Mill Feeder	Permitted	Permitted	Permitted	Permitted
Cooling Fan	Running	Running	Running	Running
Discharge Screw	Auto	Auto	Auto	Auto
Deg. C	23	19	27	20
Pellet Shaker	Running	Running	Running	Running
Bucket Elevator	Running	Running	Running	Running
West Blower Pressure			2.2	
East Blower Pressure			2.7	
South Blower Pressure			0.0	



Alarms



Alarms





